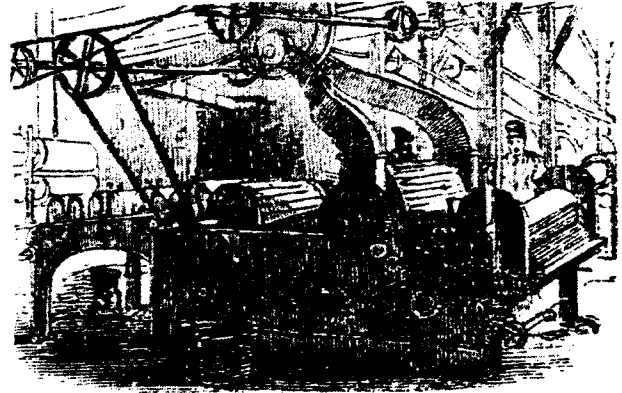


NAME: _____

WHY DID THE INDUSTRIAL REVOLUTION BEGIN IN ENGLAND?

DOCUMENT #1



The picture on the left is before the Industrial Revolution. The picture on the right is after the Industrial Revolution. Based on this document, what major changes did the Industrial Revolution bring to society?

DOCUMENT #2

“In 1750, England had one of the largest supplies of iron ore and coal in all of Europe. Machines could be built and powered endlessly; without these the Industrial Revolution would have simply disappeared in England.”

- Knowa Lotnow, English guy

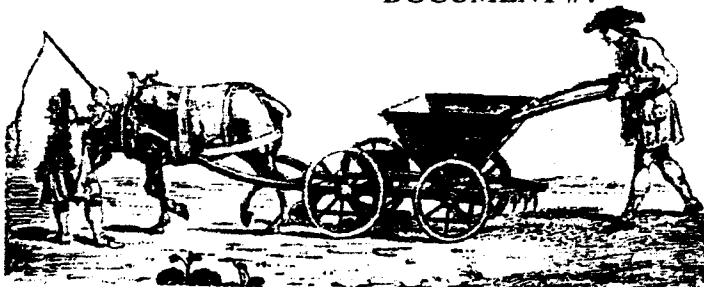
Based on this document, how did England's natural resources help spread the Industrial Revolution?

DOCUMENT #3 (on screen)

and your notes,

Based on this map, how did England's geography help it sell its manufactured products throughout the world?

DOCUMENT #4



Improved Farm Machinery
Jethro Tull's seed drill planted seeds in straight lines. Since crops planted this way grew in neat rows, they could be weeded with another new invention, the horse-drawn hoe, instead of by hand.

Jethro Tull's invention of the seed drill performed the work of twenty farm laborers, often leaving them unemployed. Where do you think they found work? _____

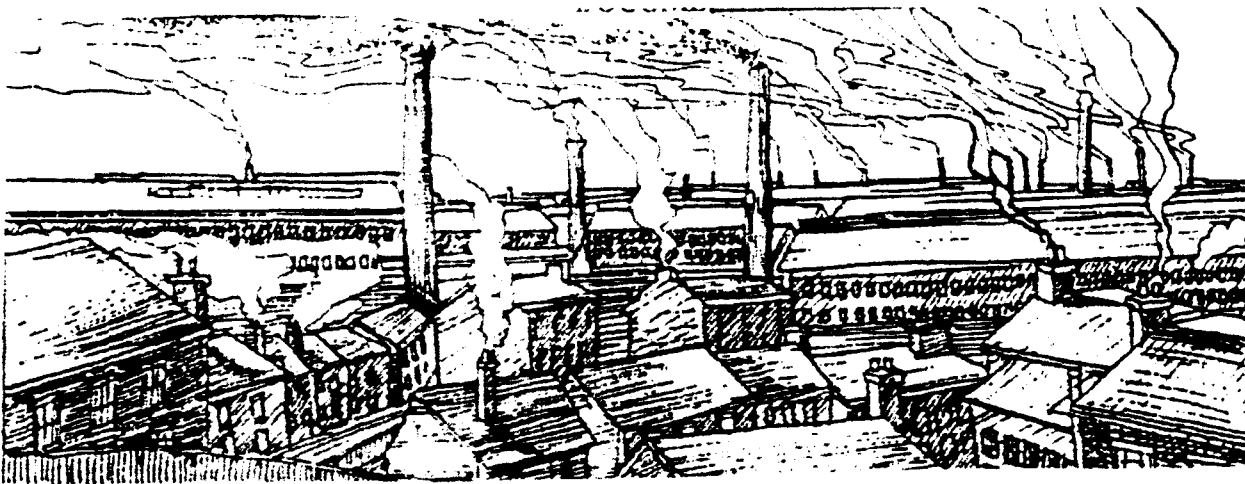
WHY DID INDUSTRIALIZATION LEAD TO PROBLEMS?

DOCUMENT # 1



Based on this document, why was there a great demand for children to work in coal mines? _____

DOCUMENT # 2



Based on document #3, why were respiratory diseases abundant in industrialized areas? _____

DOCUMENT # 3



Why would some handworkers want to destroy the new industrial machinery? _____