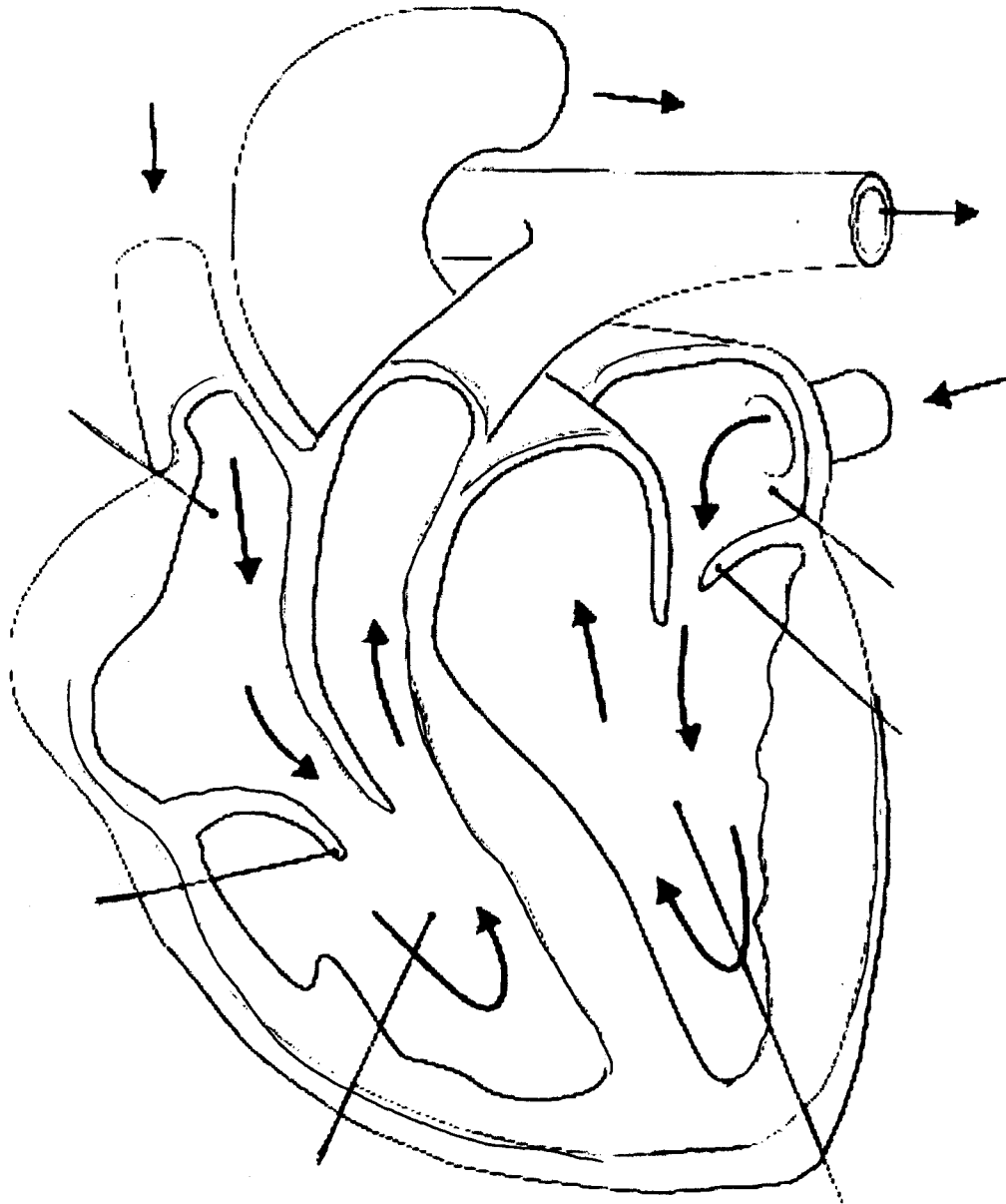


## Diagram of the Human Heart



**LABEL** the left ventricle, the left atrium, the right ventricle, the right atrium, and both valves shown in the picture. *valve, body, body, lungs, lungs*

**COLOR** the path of oxygenated (high  $O_2$ /low  $CO_2$ ) blood bright red.

**COLOR** the path of deoxygenated (low  $O_2$ /high  $CO_2$ ) blood blue.